

**MINI EXCAVATOR** | 16C-1 / 18Z-1 / 19C-1 / 19C-1 PC

**JCB**



**STAGE V**

OPERATING WEIGHT  
**1479 – 1868kg**

ENGINE POWER  
**11.7kW**

BUCKET TEAROUT  
**15.6kN / 18kN**



## CHOOSE TOUGH.

Hydraulic hoses are routed through the kingpost, boom and dipper to protect against site damage. Top-mounted boom ram reduces the risk of damage when loading.



## CHOOSE GOOD DESIGN

Full width, cast rear counterweight and 100% steel panels protect against knocks, with inexpensive repairs.





# CHOOSE EASY.

Pre-start checks are easier than ever with an external sight glass to check hydraulic oil levels and a quick to view analogue hour meter.



## CHOOSE CLOSE CONTROL

All controls are close to hand, with two-speed tracking operated by a dozer lever button.



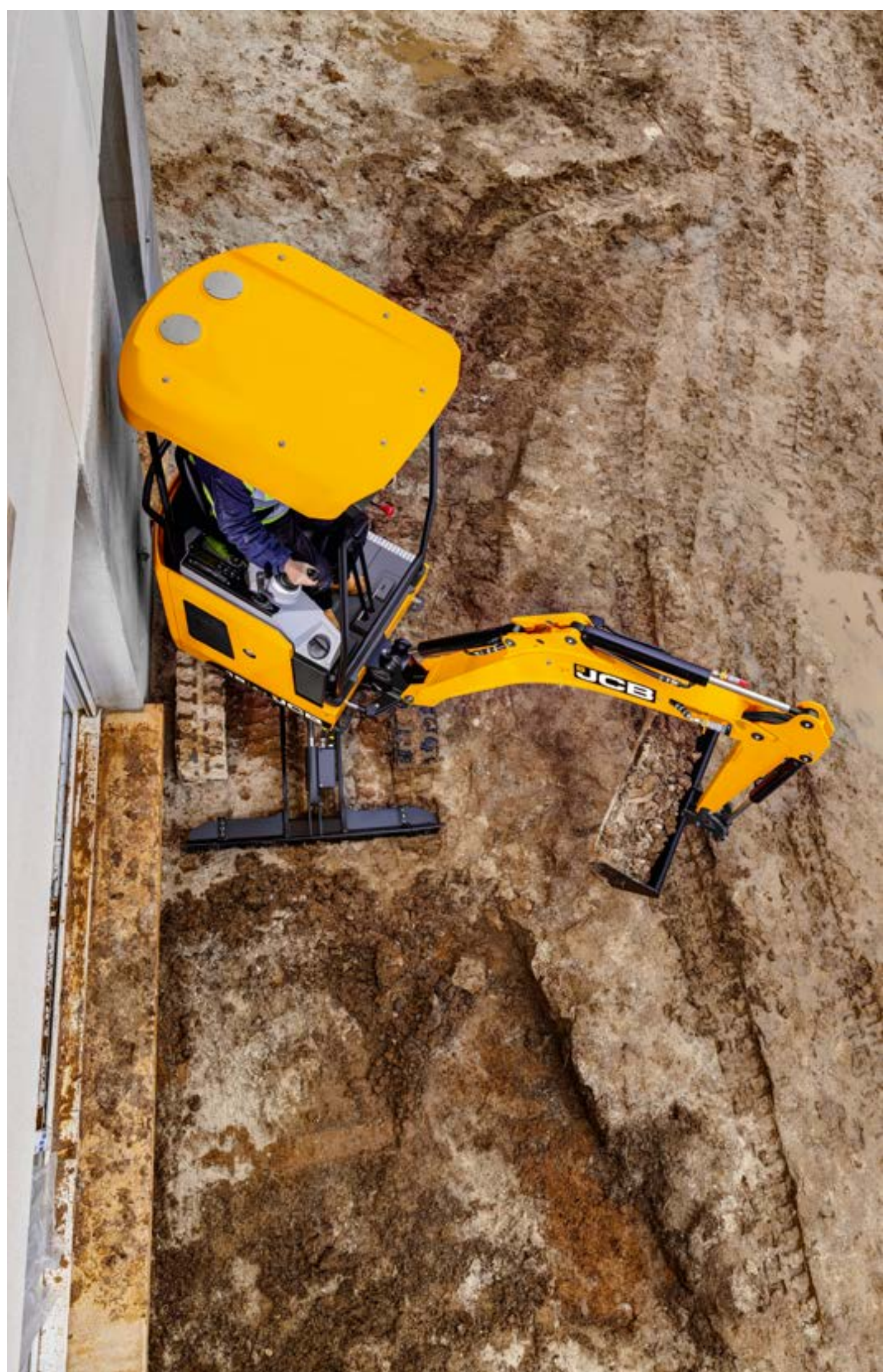
# CHOOSE QUICK.

Utilise a quick turnaround with easy-to-clean sloping undercarriage, fast changeover of attachments and easy transportation with 10 tie-down points.



## CHOOSE TO SUIT

Choose a premium or rental spec, zero or conventional tailswing, and cab or canopy.





# CHOOSE VALUE.

Our new generation minis are designed with your profits in mind with a simple, classic design, low cost maintenance and easy repairs.



## CHOOSE EFFICIENT

The Perkins 403J-07 diesel engine is Stage V compliant, without needing a DPF or AdBlue.



# CHOOSE SAFE & SECURE.

Thatcham approved immobiliser\*, with remote pin code management, eliminates unauthorised starts. Optional LiveLink provides added security.



## CHOOSE PEACE OF MIND

For additional safety, our unique 2GO hydraulic isolation system, prevents accidental machine movements.



\*Region specific



# MINI EXCAVATOR | 16C-1 / 18Z-1 / 19C-1 / 19C-1 PC



## SPECIFICATION.

MODEL		16C-1	18Z-1	19C-1	19C-1 PC
Bucket tearout	kN	15.6	18		
Service intervals	hours	500			
Transport length	mm	3860	3547	3860	3862
Height over cab (canopy)	mm	2342	2340	2345	2345
Width over tracks (retr.)	mm	980			
Transport weight canopy/cab	kg	1545/1655	1655	1736/1816	1769/1849



## STANDARD FEATURES.

- 500 hour greasing intervals
- 100% steel body panels
- Cast rear counterweight
- 100% flat cab glass
- Unique 2GO system
- Fully bushed kingpost
- 30mm bucket pins
- Electro-proportional controls
- ROPS/FOPS compliant cab
- Optional LiveLink





**JCB**

# **KEY FACTS**

## **I6C MINI EXCAVATOR**

**Choose JCB's Next Generation  
Stage V Mini Excavators**

**I-2T MINI EXCAVATORS**

**FIND OUT MORE**

**JCB**

[www.jcb.com](http://www.jcb.com)

